

MIFARE & ISO14443A & ISO14443B & ISO15693 IC CARD READER WRITER

# JMY6025 IC Card Reader

---

## User's manual

(Revision 1.01)

**Jinmuyu Electronics Co. LTD**

2021/4/8



Please read this manual carefully before using. If any problem, please mail to: [Jinmuyu@vip.sina.com](mailto:Jinmuyu@vip.sina.com)



# Contents

1	Product Introduction.....	2
2	Key Characteristics .....	2
3	Characteristics .....	2
4	Physical Parameter and Pin Outs.....	2
4.1	Photo .....	3
4.2	Dimension .....	4
4.3	Pin configurations and Pin outs.....	5
5	Module Function Configuration Table .....	5
6	Communication Protocols .....	6



# 1 Product Introduction

JMY6025 is a series of RFID read/write module. It has various functions and supports multi ISO/IEC standard of contactless card. The RF protocol is complex, but the designer combined some frequent used command of RF card and then user could operate the cards with full function by sending simple command to the module.

The impedance between RF module and antenna was tuned by impedance analyzer. And then the module has excellent performance and stability.

## 2 Key Characteristics

- Integrated antenna design, stable antenna performance and good consistency
- 2 SAM slots, full fill payment system usage
- USB HID communication interface, WIFI network interface
- EMV2010 certification ability in RF protocol part

## 3 Characteristics

- PCD model: NXP CL RC663
- Working frequency: 13.56MHz
- Supported standard: ISO14443A, ISO14443B, ISO15693, ISO7816
- Operating distance: 70mm (M1 typical distance, depending on card quality)
- SAM slots: 2, T=0 & T=1 9600, 19200, 38400, 55800, 57600, 115200bps, 230400bps
- Buzzer: Yes
- Interface: USB HID, WIFI network
- Power supply: DC 5V ( $\pm 10\%$ )
- Power consumption: Max. 250mA
- Weight: About 30g
- Dimension: 100mm \* 70mm \* 12mm
- Operating temperature: -25 to +85 °C
- Storage temperature: -40 to +125 °C
- ISP: Supported
- RoHS: By order

## 4 Physical Parameter and Pin Outs

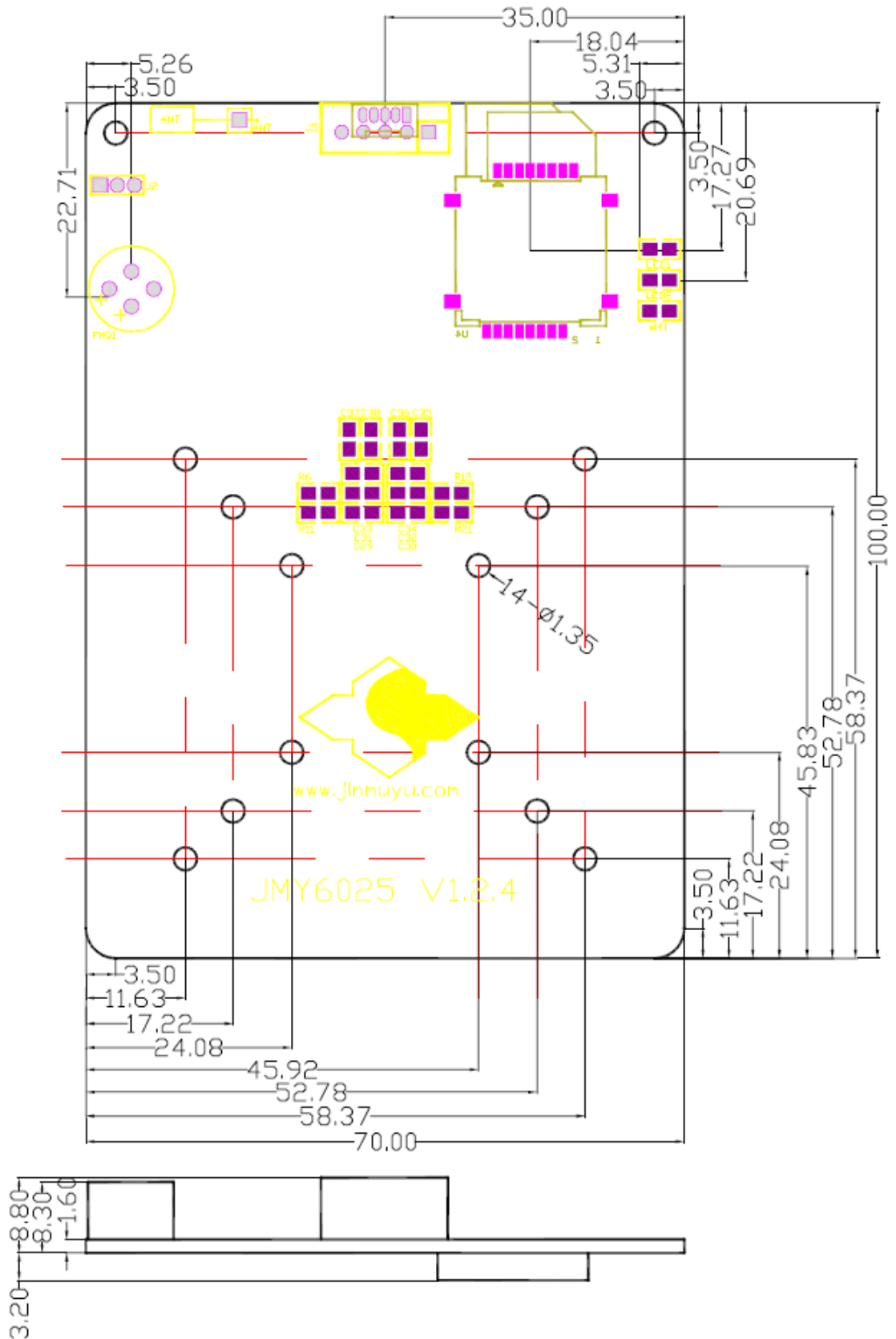


## 4.1 Photo (front and back)





## 4.2 Dimension





### 4.3 Pin configurations and Pin outs

Pin number	Pin	Function	Description
J5、J6	1	GND	USB HID
	2	GND	
	3	VCC	
	4	D+	
	5	D-	
J2	1	GND	WIFI network
	2	RX	
	3	TX	
	6	W-T	

## 5 Module Function Configuration Table

	JMY6025
PCD	RC663
MIFARE 1K	●
MIFARE 4K	●
MIFARE Mini	●
MIFARE Ultra Light	●
MIFARE Ultra Light EV1	●
MIFARE Ultra Light C	●
MIFARE DES fire	●
MIFARE DES fire EV1	●
MIFARE Plus	●
T=CL TYPE A	●
SR176	●
SRI512	●
SRI1K	●
SRI2K	●
SRI4K	●
SRIX4K	●
T=CL TYPE B	●
I.CODE 1	●
I.CODE SLI	●
I.CODE SLI-S	●



TI Tag-it series	●
ST LRI series	●
ISO7816 PPS	●
ISO7816 T=0	●
ISO7816 T=1	●

## 6 Communication Protocols

The physical interfaces of module are various. But the data link layer protocols are in accordance with JCP04 and JCP05. Please reference "JMY600 Series IC Card Module General Technical Manual".

For convenience to test the Module, we supply PC software: TransPort to users.

We have interface program source code to help users also. They are KELL projects in C51 or ASM51 format.

Please log in our website: [www.jinmuyu.com](http://www.jinmuyu.com) to download or mail to [jinmuyu@vip.sina.com](mailto:jinmuyu@vip.sina.com) to obtain the resources.